

Ilokhwe eluhlaza

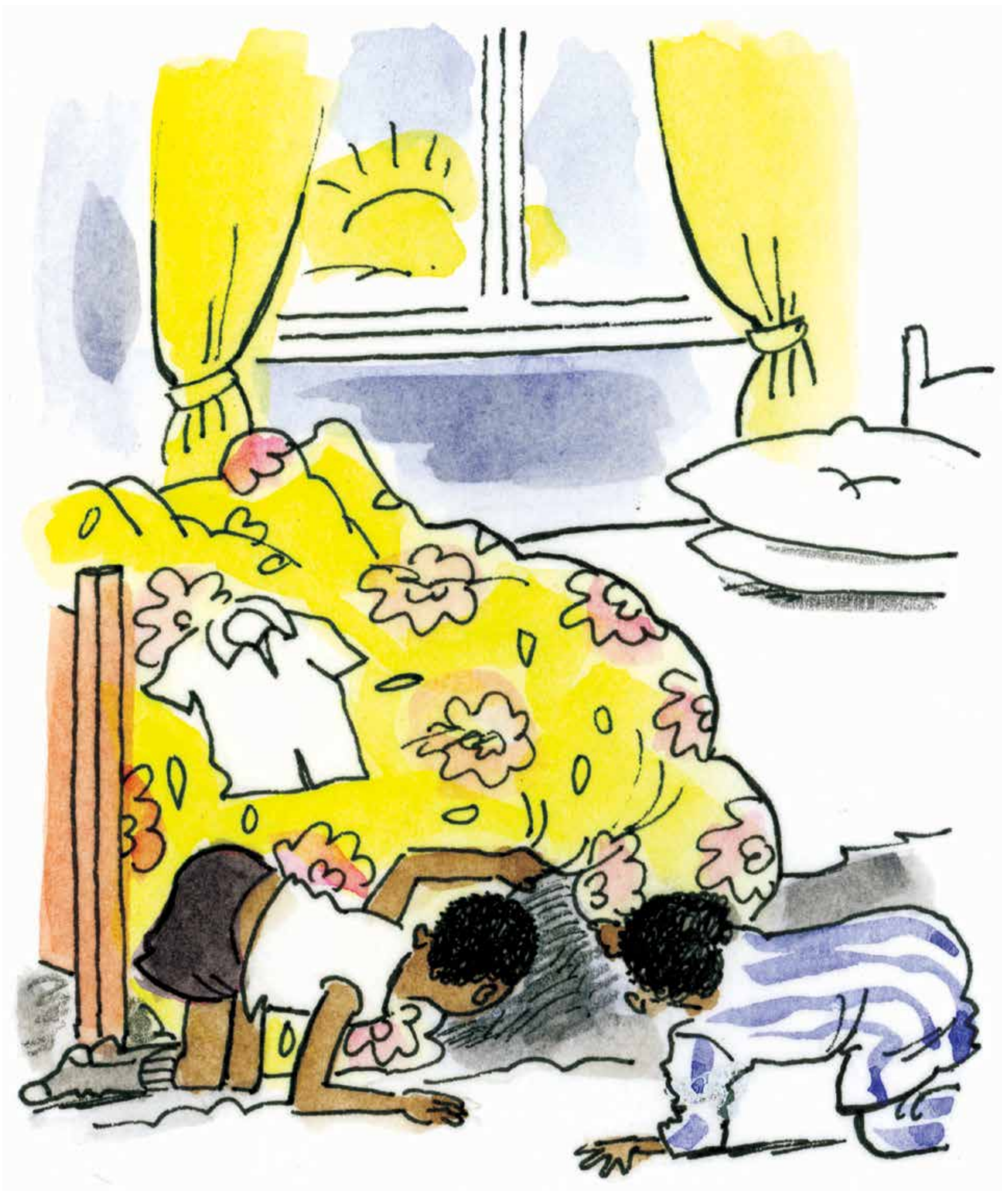


UMbhali: Brigid Comrie

Imizobo: Helga Hoveka



UZinzi wayekhathazekile.
Wayengayiboni ilokhwe
yakhe.



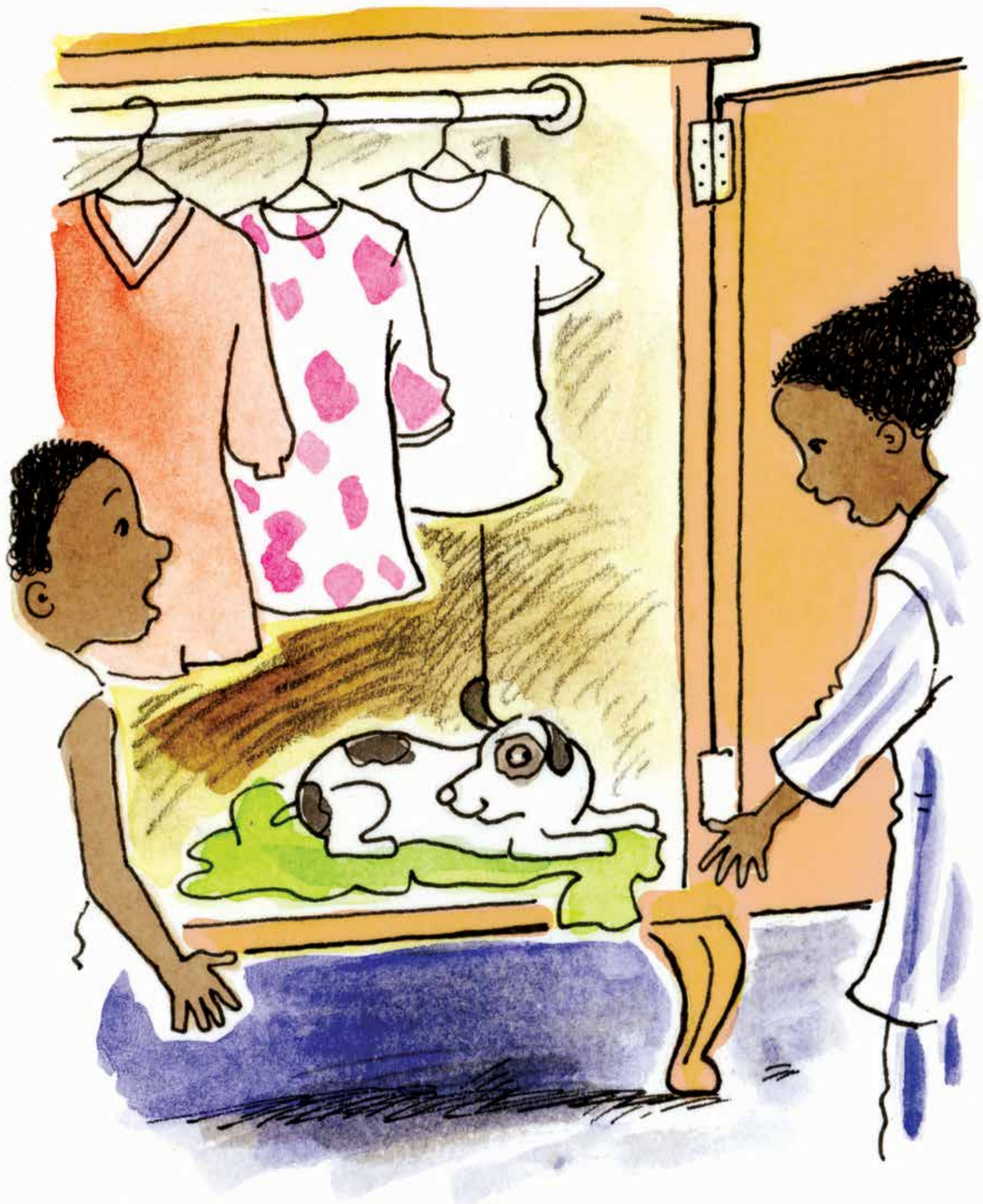
“Iphi?” watsho uZinzi.
UZinzi noSam bajonga
phantsi kwebhedi.



“Iphi?” batsho uZinzi noSam.
UZinzi noSam bakhangela
emva kocango.



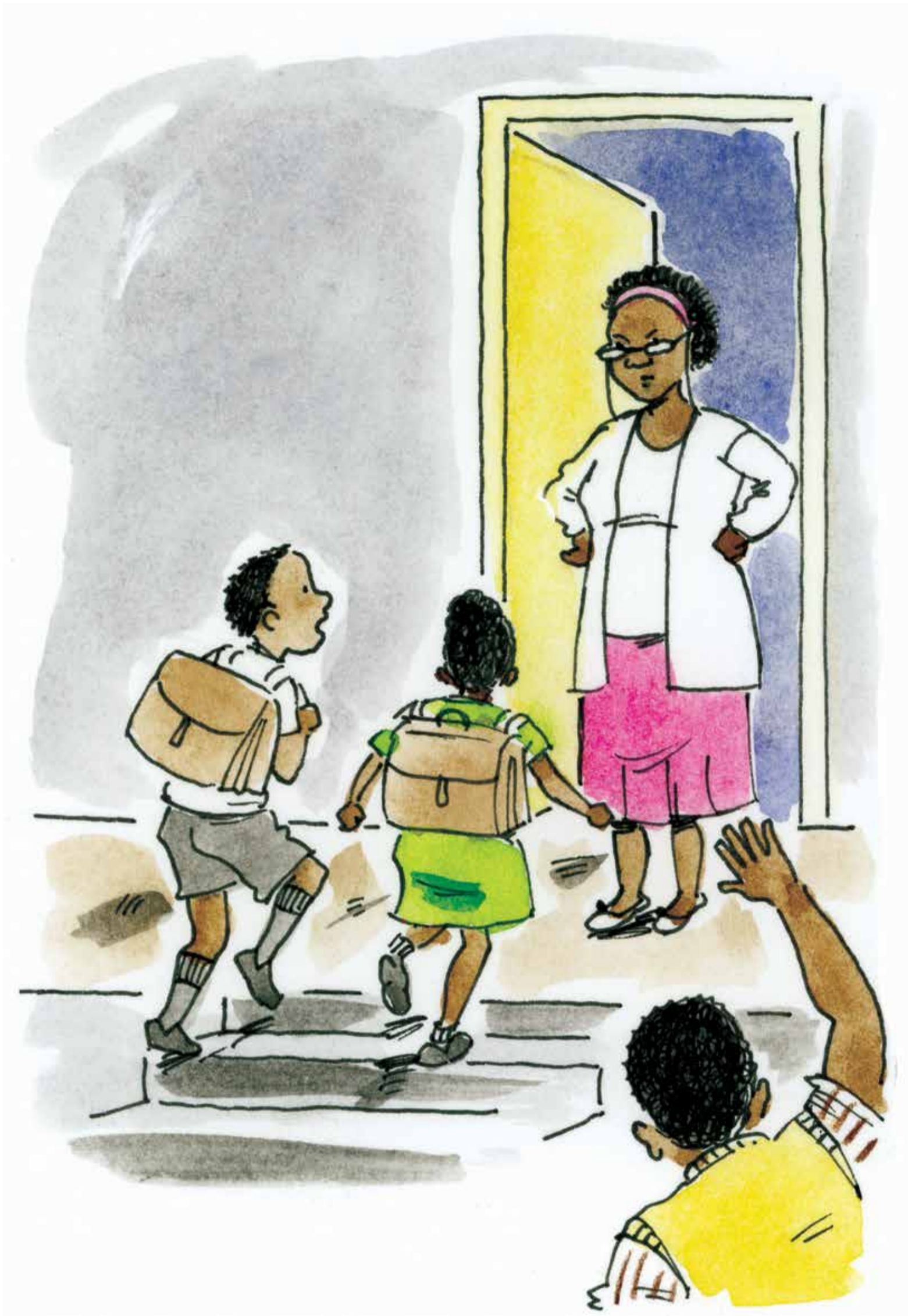
“Yingxolo yantoni leyo?”
watsho uSam.



“Jonga, nguSpoti.
Uhleli phezu kwelokhwe yam!”
watsho uZinzi.



“Nantsi ilokhwe yakho eluhlaza,” watsho uSam. UZinzi wavuya.



“Uxolo, silati esikolweni,”
watsho uSam.